



TOWN OF STRATHMORE
ENGINEERING DESIGN AND
CONSTRUCTION STANDARDS MANUAL

APPENDIX B

Flushing, Testing, and Disinfection Manual for New
Water and Sanitary Sewer Mains

2022



EPOR WATER SERVICES
AND THE
TOWN OF STRATHMORE

FLUSHING, TESTING, AND
DISINFECTION MANUAL FOR NEW WATER
AND SANITARY SEWER MAINS

2022

TABLE OF CONTENTS

1.0	General	6
1.1	Definitions, Roles, and Responsibilities.....	6
1.2	Minimum Requirements for Flushing, Testing, and Disinfection.....	6
1.2.1	Minimum Requirements for Flushing, Testing, and Disinfection of New Water Mains and Forcemains and New Sewer Mains	6
1.3	Prerequisite Requirements	8
1.4	Request for EPCOR Inspection Services	9
2.0	Water Main Flushing	10
2.1	Preliminary Cleaning of Small Distribution Mains (Less Than 300 mm) and Services.....	10
2.2	Preliminary Cleaning of Large Diameter Mains (300 mm and Greater) and Forcemains.....	10
2.3	Flushing of Water Main and Forcemain Replacement Sections	11
3.0	Hydrostatic Leakage and Pressure Testing	12
3.1	Flushing of Water Main and Forcemain Replacement Sections	12
3.1.1	Allowable Leakage.....	12
3.2	Air Testing of Water Distribution Mains and Forcemains	13
3.3	Ovality Testing of HDPE Water Distribution Mains and Forcemains.....	13
4.0	Water Main Disinfecting and Final Flush	14
4.1	Disinfecting and Final Flushing of Water Mains and Services.....	14
4.1.1	Chlorination of Mains	14
4.1.2	Dechlorination of Super Chlorinated Water	14
4.1.3	Final Flushing of Water Mains.....	15
5.0	Sampling and Bacteriological Testing	16
6.0	Sanitary Sewer Mains	17
7.0	Monitoring, Documentation, and Reporting	18
7.1	Monitoring of the Work	18
7.2	Documentation.....	18
7.3	Final Report	18

PREAMBLE

PRIOR TO THE COMMENCEMENT OF ANY WORK IN THE TOWN OF STRATHMORE, ALL APPROVALS MUST BE IN PLACE. THIS INCLUDES BUT IS NOT LIMITED TO DEVELOPMENT AGREEMENTS, SECURITIES, AND DEVELOPMENT PERMITS.

Important Numbers

Town of Strathmore Infrastructure and Development Services.....	403.934.3133
Email.....	infrastructure@strathmore.ca
Strathmore Operations	403.934.2137
Email	operations@strathmore.ca
EPCOR (Water or Sewer Emergencies)	403.934.9440
Email	stathmore@epcor.ca
Waste Management	1.934.5605
Alberta1Call	1.800.242.3447
Strathmore RCMP.....	911 or 403.934.3535
Strathmore Fire Department	403.934.3022
Municipal Enforcement	403.361-2112

Emergency Numbers

Shaw Cable Locates (Emergency Requests).....	1.866.DIG SHAW (344.7429)
ATCO Gas	1.800.511.3447
Strathmore Operations (After Hours Emergency).....	403.361-2137
EPCOR (Water or Sewer Emergencies)	403.934.9440
Fortis Alberta (Electrical Emergencies)	403.310.WIRE (9473)

REVISIONS

<i>Section</i>	<i>Page Number</i>	<i>Description</i>	<i>Date</i>

1.0 General

All Developers, Consultants and Contractors shall comply with the following procedures and methodologies for the flushing, testing, and disinfection of any potable water distribution systems and sanitary sewers, or portions thereof, installed within the municipal boundaries of the Town of Strathmore.

1.1 Definitions, Roles, and Responsibilities

Town	The Town of Strathmore who is the OWNER of the sanitary and water systems and the final authority as to the acceptability of the work performed, and product delivered by, the Developer
Developer	The firm/company/corporation signatory to the Development Agreement between the Town and the Developer. The Developer is the party in the first instance responsible for the execution, product delivery and compliance with the flushing, testing, and disinfecting requirements contained in this manual.
Consultant	The Developer's engineering/design consultant and his representative(s). It is the responsibility of the Consultant to monitor, inspect, document and report the Contractor's compliance with the flushing, testing and disinfecting requirements contained in this manual.
Contractor	The construction firm engaged by the Developer to construct the sanitary and water system. It is the responsibility of the Contractor to comply with the flushing, testing, and disinfecting requirements contained in this manual, and to ensure the acceptability of the infrastructure delivered to the Developer and the Town of Strathmore.
Potable Water	Water meeting the quality standards outlined in the latest edition of the "Guidelines for Canadian Drinking Water Quality" published by the federal health ministry.

1.2 Minimum Requirements for Flushing, Testing, and Disinfection

1.2.1 Minimum Requirements for Flushing, Testing, and Disinfection of New Water Mains and Forcemains and New Sewer Mains

Figure 1-1 summarizes the minimum requirements for the flushing, testing, and disinfecting of new water mains and forcemains, and presents the chronological sequence in which the requirements must be executed.

Figure 1-1
 Town of Strathmore
Minimum Requirements for New Water Distribution Mains and Supply Mains

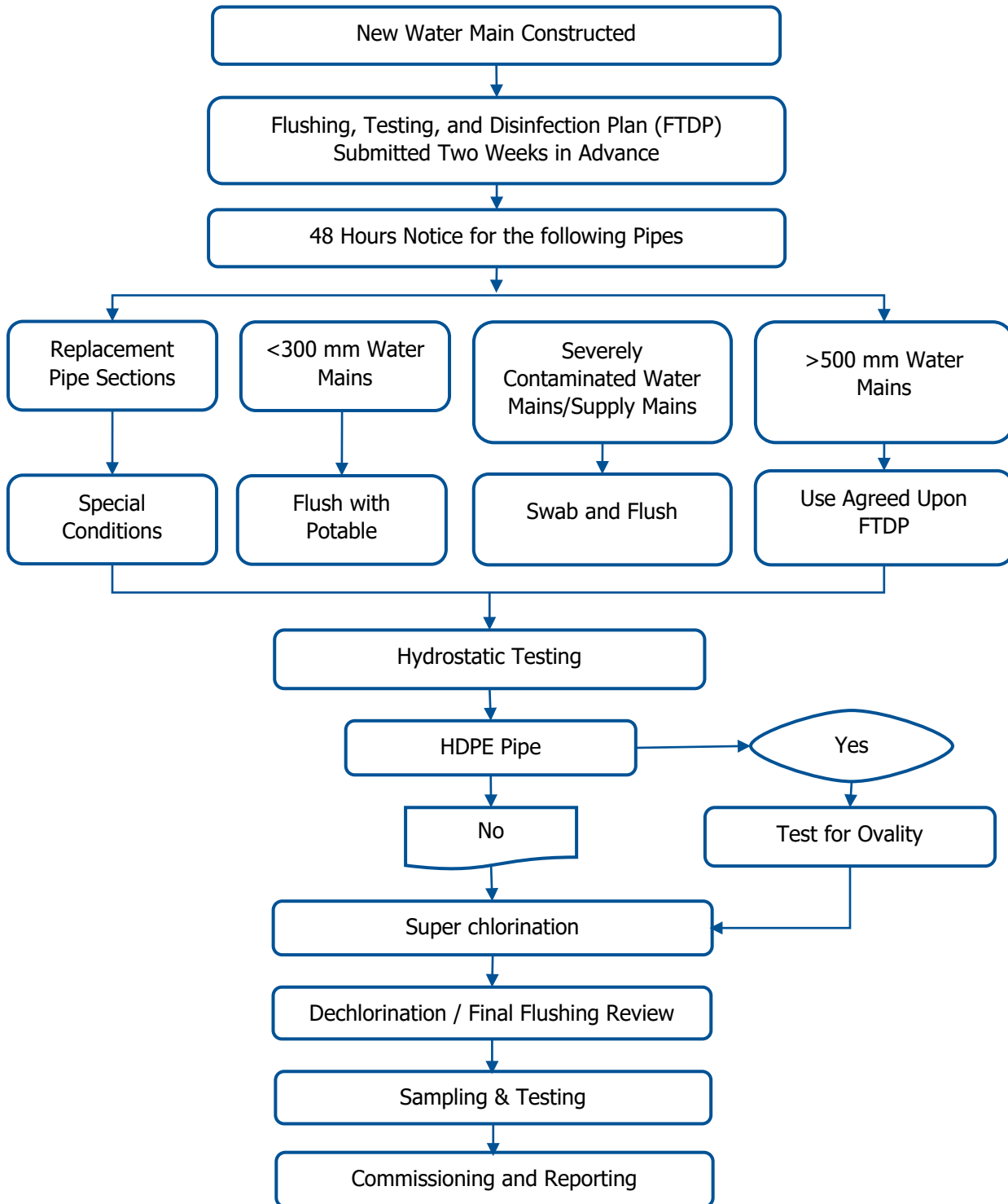
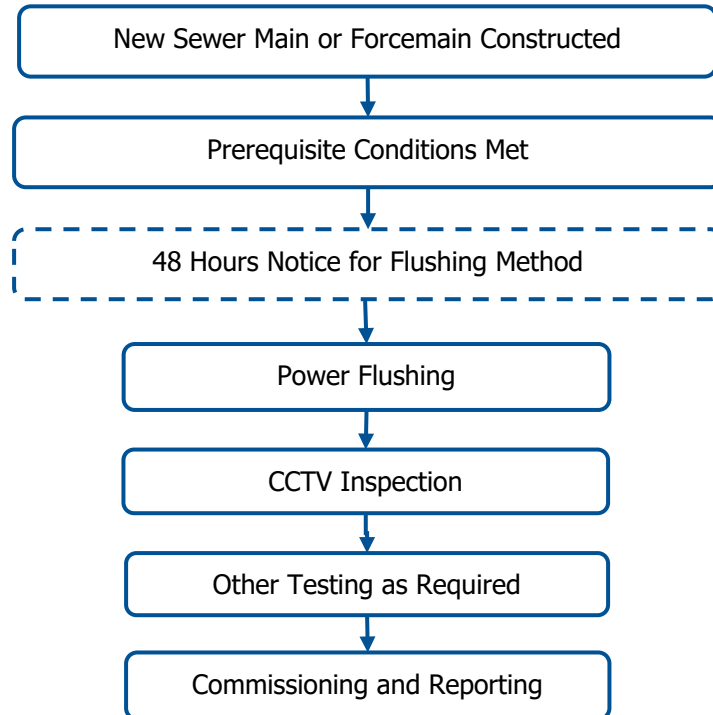


Figure 1-2 summarized the minimum requirements for the flushing, testing, and disinfecting of new sewer mains and forcemains and presents the chronological sequence in which the requirements must be executed.

Figure 1-2
Town of Strathmore
Minimum Requirements for New Sewer Mains and Sewer Forcemains



1.3 Prerequisite Requirements

1. Prior to proceeding with the tapping of the sewer and water services, the Consultant shall review the Contractor's proposed tapping procedures with the Contractor's site superintendent/foreman to ensure compliance with the City of Calgary and the pipe manufacturer's tapping procedures.
2. The Consultant shall confirm and document that the methodology and equipment to be deployed by the Contractor complies with City of Calgary, AWWA and industry accepted standards and guidelines for this work.
3. No flushing, testing or disinfection of the water mains, or flushing of the sanitary sewer mains, shall commence until all the mains and services have been completely installed, including all water distribution system and sanitary sewer forcemain appurtenances. Flushing and pressure testing to be completed after service has been tapped but prior to service connection (before connections between curb stop and residence or business). No installations of any sort shall be allowed after the mains have been flushed and/or tested.
4. A minimum of two (2) weeks prior to commencing with any flushing, testing and disinfecting of the water mains, and flushing of the sewer mains, the Contractor shall submit a Water and/or Sewer Main Flushing, Testing and Disinfecting Plan (FTDP) to the Consultant and Town of Strathmore for review and documentation.
5. The Flushing, Testing and Disinfecting Plan shall provide a written detailed, outline of the methodology(s) that the Contractor proposes to use when conducting the flushing, testing, and disinfecting of the water

and sewer mains to meet standard practices.

6. The Consultant shall include in the plan, the use of a backflow prevention device equipped with the ability to meter water consumption to prevent cross-contamination between the sanitary sewer system and the potable water system. The device will have been tested to meet all applicable standards and regulations by a Certified Backflow Prevention Tester prior to installation. An EPCOR representative shall be present at time of connection.
7. The Consultant shall provide the Town of Strathmore and the Town's representative (EPCOR) with forty-eight (48) hours notice of intent to proceed with the flushing, testing, and disinfecting of the completed water and sewer mains.
8. The Consultant shall review the flushing, testing, and disinfecting procedures with the Town of Strathmore and the Town's representative (EPCOR) to confirm compliance with the minimum requirements of this manual.
9. An EPCOR representative and the Consultant shall be present during the entire flushing, testing and disinfecting operation(s) to monitor the Contractor's compliance with the requirements of the Flushing, Testing, and Disinfecting Plan, and to document the results of the flushing, testing, and disinfection process.
10. Procedures are to be conducted by competent and experienced personnel using equipment appropriate for the piping being flushed, tested, and disinfected.
11. Fire hydrants shall be operated in a full-open or full-closed position only.
12. Town of Strathmore and Town of Strathmore's representative shall have unrestricted access to the site at all times during the flushing, testing, and disinfection operation.
13. All flushing shall be in compliance with Town of Strathmore Bylaws for direct billing of water consumption.

1.4 Request for EPCOR Inspection Services

1. All requests for inspection services to be submitted via email only at
2. All email requests must be cc'd to the Town at infrastructure@strathmore.ca
3. All work requests need to provide a minimum of 48 hours advance notice.
4. All requests for CCC/FAC are to be requested through the Town at infrastructure@strathmore.ca

2.0 Water Main Flushing

2.1 Preliminary Cleaning of Small Distribution Mains (Less Than 300 mm) and Services

1. Upon completion of all water main installations and the prerequisite requirements, all distribution mains and services (up to the service valves) shall be thoroughly flushed with potable water to remove entrapped air and foreign matter.
2. Distribution mains greater than 300 mm in diameter shall be swabbed and flushed as per the requirements for swabbing and flushing of water mains outlined in Section 2.2.
3. If, in the opinion of the Consultant and/or Town of Strathmore, the water mains (regardless of size) were subjected to severe contamination and/or injected with debris during the installation of the water mains, the water mains shall be swabbed and flushed in accordance with the requirements given in Section 2.2.
4. The Consultant shall notify the Town of Strathmore of the source of the potable water. If the potable water is to be withdrawn from the Town of Strathmore distribution system, notify Town of Strathmore at least forty-eight (48) hours in advance of withdrawing water from the Town's water system.
5. The preliminary flushing procedure shall be as follows:
 - a. Flushing shall be a Uni-Directional Flushing (UDF) methodology.
 - b. Flushing shall be conducted at a minimum velocity of 1.5 m/s for a minimum duration of fifteen (15) minutes over a maximum main length of 600 m for mains up to and including 250 mm of main diameter (AWWA Standard).
6. The Contractor shall provide and install a Pitot Gauge suitable for verifying the required flushing velocity.
7. The Contractor shall supply a stopwatch to accurately time the duration of the flush at the required velocity.
8. Test the flush water using an approved turbidimeter (HACH) in the presence of the Consultant and/or Town of Strathmore representative.
9. Flush and test each section of main until the turbidity is 1.0 NTU or less.
10. The flush water shall not be discharged to the sanitary or storm sewer systems without prior approval of the Town of Strathmore. Flush water (and debris) shall be discharged to a suitable disposal area as reviewed and approved by the local authority(s) having jurisdiction.

2.2 Preliminary Cleaning of Large Diameter Mains (300 mm and Greater) and Forcemains

1. Water distribution mains 300 mm diameter and larger shall be swabbed and flushed.
2. The swabbing and flushing procedure shall be as follows:

If swabbing of the water mains is required, the Contractor shall include a Swabbing and Flushing section in the Water Main Flushing, Testing, and Disinfecting Plan. The swabbing section shall detail the swabbing and preliminary flushing methodology. Details shall include, but not be limited to:

 - a) A descriptive outline of the swabbing methodology
 - b) Type and size of swabs
 - c) Swab launch/retrieval locations
 - d) Main sections to be swabbed
 - e) Flushing velocities and durations
 - f) Monitoring and documentation procedures
 - g) Swab pumping pressures
 - h) Method for collection and disposing of swab debris and flush water
 - i) Schedule for flushing/swabbing
 - j) Source of water for flushing

3. Swabs shall be urethane type and shall have a diameter of at least 50 mm larger than the largest pipe nominal diameter.
4. Each main section shall be swabbed by passing a minimum of three (3) swabs through the main section being swabbed.
5. Swabbing of the mains shall continue until the swab shows no further evidence of contaminants (dirt) in the pipes.
6. All pipes are to be swabbed.
7. The Contractor shall supply and install temporary launch/retriever ports to facilitate swabbing.
8. Contractor to remove these items following the completion of the swabbing.
9. Test the flush water using an approved turbidimeter (HACH) in the presence of the Consultant and Town of Strathmore's representative (EPCOR).
10. Flush and test each section of main until the turbidity is 1.0 NTU or less.
11. If, in the opinion of Town of Strathmore or its representative (EPCOR), the required swabbing and flushing job exceeds the Contractor's capabilities or the degree of main contamination is too severe, the Town of Strathmore may require the Contractor to engage the services of a professional firm specializing in utility systems servicing and maintenance, at the Contractor's expense, to swab and flush the water mains.
12. For exceptionally large water distribution mains and forcemains (e.g. 500 mm diameter mains or larger), where it is impractical to clean and flush the mains using the methodologies outlined above, the Water Main Flushing, Testing, and Disinfecting Plan shall specifically address and detail the methodology proposed for cleaning and flushing the large diameter mains.

2.3 Flushing of Water Main and Forcemain Replacement Sections

1. Tap 50 mm main stops through saddles at the ends of the main section to be flushed and tested.
2. After completion of the flushing, testing and disinfection, remove the main stops and saddles:
 - a. PVC pipe: Install a PVC repair coupling over the tapping holes.
 - b. DI or Steel pipe: Install a mechanical repair coupling over the tapping holes.
 - c. HDPE pipe: Install a mechanical repair coupling over the tapping holes or leave the main stop and saddle in place.
3. The exact methodology proposed by the Contractor shall be reviewed with the Consultant and Town of Strathmore prior to commencing the flushing, testing and disinfection of a water main or forcemain section replacement.

3.0 Hydrostatic Leakage and Pressure Testing

3.1 Flushing of Water Main and Forcemain Replacement Sections

1. Tests are to be completed in accordance with AWWA C605 for PVC pipe and AWWA C906 for HDPE pipe.
2. Hydrostatic testing is to be conducted by competent and experienced personnel using equipment appropriate for the piping being tested and the test pressures applied. An EPCOR Representative to attend the testing.
3. For all flushing of the water mains and services, the use of a backflow/cross connection prevention device must be installed during the procedure.
4. Install temporary struts and bracing, as required, to guard against pipe movement when test pressures are applied.
5. The test pressure shall be monitored with a suitable pressure gauge.
6. Flow control shall be monitored by means of a throttling valve installed on the hydrant discharge line(s) on a temporary basis.
7. Install corporation stops complete with service saddles at high points in main where no air vacuum release valves are installed to allow for the expulsion of air. Cap and record location of the corporation stops after satisfactory completion of test.
8. Open all main valves within the test section.
9. Expel air from main by slowly filling main with potable water at a filling velocity of <0.5 m/s.
10. Cement mortar lined pipe shall be left to soak for a minimum of forty-eight (48) hours at 100% of the test pressure prior to testing.
11. Test pressures shall not exceed the pipe manufacturer's recommended maximum test pressure.
12. Do not conduct tests when ambient air temperatures drop below -5°C during the test period. If the temperature(s) drop below -5°C at any time during the test, the test shall be considered invalid and a re-test will be required.
13. Test pressures to be 1,035 kPa (150 psi), based on the elevation of the lowest point of the main being tested and corrected to the elevation of the test gauge.
14. The test pressure shall be maintained continuously for a minimum of two (2) hours.
15. Maintain the specified test pressure by injecting additional water if test pressure deviates from the specified pressure by 13.8 kPa (2.0 psi) or more; retest.
16. Thoroughly examine exposed parts and correct for leakage as necessary.
17. Remove pipes, joints, fittings and appurtenances found defective and replace with new sound material and make watertight.
18. Repeat hydrostatic test until all defects have been corrected.
19. Define leakage as amount of water supplied from water storage tank or meter in order to maintain test pressure for two (2) hours.
20. Locate and repair defects if leakage is greater than amount specified in 3.1.1.
21. Repeat test until leakage is within specified allowance for full length of water main.

3.1.1 Allowable Leakage

1. Allowable leakage is defined as the quantity of make-up water that must be pumped into the main being tested in order to maintain the test pressure within 13.8 kPa (2.0 psi).
2. HDPE pipe sections shall be considered as jointless.

3. Allowable leakage for PVC, HDPE and Welded Steel pipe is 0.0 L/h regardless of the number of joints being tested.
4. For mechanically jointed pipe metal pipes, no installation shall be accepted if the leakage is greater than that determined by the following formula:

$$L = \frac{ND (P 0.5)}{32,046}$$

Where:

- L = allowable leakage (litres per hour)
- N = Number of joints in the pipeline's test section
- D = Nominal diameter of the pipe (mm)
- P = Average test pressure (kPa)

3.2 Air Testing of Water Distribution Mains and Forcemains

1. The use of compressed air for pressure testing water distribution mains and forcemains shall not be allowed under any circumstances.
2. Any attempt(s) to use compressed air for testing purposes shall result in the test results being rejected by Town of Strathmore.

3.3 Ovality Testing of HDPE Water Distribution Mains and Forcemains

1. All HDPE water distribution mains and force mains or portions thereof, shall be tested for ovality (pig tested).
 - a. The Contractor shall submit an Ovality Test Plan, outlining the methodology for conducting the test, for review by the Town of Strathmore.
 - b. The test shall be conducted using a hard, non-compressible test pig with a minimum diameter equal to 90% of the nominal inside diameter of the pipes being tested.
 - c. The pig shall be pulled through the main section by one man pulling on a rope without the aid of any power assist or mechanical advantage.
 - d. Alternatively, the Contractor may propel the test pig through the HDPE main hydrostatically, provided that the test pig can be retrieved in the event that the pig fails to transit smoothly through the pipe.

4.0 Water Main Disinfecting and Final Flush

4.1 Disinfecting and Final Flushing of Water Mains and Services

4.1.1 Chlorination of Mains

1. Upon the completion of the preliminary flushing, pressure and leakage testing, to the satisfaction of the Consultant and Town of Strathmore, all distribution mains, services and supply mains tested shall be disinfected in accordance with the Contractor's Water Main Flushing, Testing, and Disinfecting Plan and the following requirements:
 - a. The Contractor shall provide the Consultant and Town of Strathmore with the MSDS sheets for the type of chlorination and dechlorination agents to be used for the disinfection and dechlorination process.
 - b. Disinfect and flush the mains in accordance with the latest edition of AWWA Standard C651 for Disinfecting Water Mains.
 - c. An aqueous chlorine solution of sodium hypochlorite (HTH) shall be injected into the main being disinfected while sufficient water is being discharged through the main to bring the chlorine concentration throughout the main to a minimum concentration of 50 mg/L (50 ppm).
 - d. The use of chlorine tablets will not be allowed.
 - e. The disinfecting, testing and final flushing procedure must be witnessed by the Consultant.
 - f. Calcium hypochlorite shall conform to AWWA B300-99. Sodium hypochlorite shall conform to AWWA B301-99.
 - g. The chlorine solution shall be injected at the start of the water main test section with the discharge at the extreme end of the test section.
 - h. Take samples from various sampling points along the main and test, using an approved test kit (HACH), to confirm that the entire test section is at the specified chlorine concentration.
2. Once the Contractor has confirmed that the entire test section is at the specified chlorine concentration, the intake and discharge valves shall be closed, and the test section left to stand a minimum of twenty-four (24) hours.
3. At the beginning of the contact period, all valves (including hydrant valves) and hydrants shall be operated to ensure that all parts have been in contact with the chlorine solution.

4.1.2 Dechlorination of Super Chlorinated Water

1. Super chlorinated water must be dechlorinated before being discharged to the environment.
2. Dechlorination of the super chlorinated water shall be done by adding sodium thiosulphate into the discharge stream of the flush water at the end of the test main.
3. The dechlorinated water must be continually field tested to confirm the effectiveness of the dechlorination process. Chlorinated water shall not be discharged to the environment.
4. If the dechlorinated water shows a chlorine concentration, discontinue the flushing and dechlorination procedure and increase the strength of the sodium thiosulphate solution until the dechlorinated water's chlorine concentration is confirmed to be <0.0 mg/L.
5. Continue flushing and dechlorinating until testing of the flush water confirms a chlorine residual in the range of 0.5 mg/L to 1.0 mg/L or equal to the Town of Strathmore's system, with a turbidity level of <1.0 NTU.
6. Dechlorinated flush water shall be discharged to a disposal area(s) approved by the Consultant, Town of Strathmore and any local and/or provincial authorities having jurisdiction.
7. Upon satisfactory completion of the chlorinating and final flushing, the tested section of water main shall

be isolated from all other water mains pending the results of the bacteriological testing.

4.1.3 Final Flushing of Water Mains

1. After twenty-four (24) hours (minimum), the test section shall be flushed with potable water to expel all super chlorinated water.
2. Final flushing through the mains shall be conducted so that the flushing velocity ranges between 0.5 m/s and 0.75 m/s for a minimum duration of fifteen (15) minutes for a maximum main length of 600 m.
3. Continue flushing until testing of the discharging water confirms a chlorine residual in the range of 0.5 mg/L to 1.0 mg/L or equal to the Town of Strathmore's system with a turbidity level of <1.0 NTU.
4. For water mains that will be placed into immediate service or replacement portions of existing water mains, flush the mains until the chlorine residual matches the system.
 - a. Chlorinated water must not be released into a storm sewer, the Western Irrigation District (WID) canal, or ditches and water courses or wetlands.

5.0 Sampling and Bacteriological Testing

1. Immediately following a repair to a break after the specified final flushing results have been achieved and verified by the Consultant and/or Town of Strathmore, the Contractor shall obtain a minimum of three (3) water samples. One each at the start, middle and end of the water main section being tested. Sampling at the end of line is required for all new installations of new line.
2. Samples shall be obtained from sampling points at the main, hydrants, service(s) or temporary sampling points provided by the Contractor.
3. Samples taken from temporary flushing hoses and devices are not acceptable.
4. Water samples shall be submitted to an approved and certified testing laboratory (City of Calgary Water Resources lab, Provincial Health lab, private testing firm) within twelve (12) hours of the sample being taken.
5. The samples shall be tested for turbidity, chlorine residual and microbiological parameters.
6. Copies of the laboratory report shall be submitted to the Consultant and Town of Strathmore prior to commissioning the water main.
7. Should any of the tests indicate that the water failed to meet the requirements and definitions for potable water as defined in the latest edition of the "Guidelines for Canadian Drinking Water Quality" and Alberta Environment's standards and guidelines for potable water, the Contractor shall repeat the disinfecting and final flushing procedure until the water quality tests indicate that the water in the main complies with the potable water requirements and definitions.
8. When the water quality is acceptable to the Consultant and Town of Strathmore, the water main may be commissioned for immediate use.
9. If immediate commissioning of the water main is not required, the main shall be left fully charged and isolated.
10. If the tested and disinfected water mains (or portions thereof) lie dormant for a period of greater than 30 days, the stagnant water in the dormant mains shall be flushed out with potable water until test results indicate that the chlorine residual in these mains is >0.5 mg/L.

6.0 Sanitary Sewer Mains

6.1 Flushing and Inspection of Sewer Mains and Services

1. Upon completion of all sanitary sewer system installations and the prerequisite requirements, all sewer collection mains and services (up to the plugged Inspection Chambers) shall be thoroughly flushed with potable water to remove sediments and solids. To remove any potential debris buildup within the sanitary mains they should be flushed at at least 1.5 m/second velocity in order to remove settled solids or construction debris. Velocity can be calculated using the meter on the hydrant used for flushing and the dimensions of the pipe.
2. Notify the Engineering Consultant of the source of the potable water. If the potable water is to be withdrawn from the Town of Strathmore distribution system, notify the Town at least forty-eight (48) hours in advance of withdrawing water from the Town's water system.
3. For all flushing of the sewer mains and services, the use of a backflow/cross connection prevention device must be installed during the procedure.
 - 3.1 The sewer flushing procedure shall be one of the following methods:
 - a. Gravity Flushing:
 - i. Flush using the Gravity methodology.
 - ii. Flushing shall be conducted at a minimum velocity of 1.5 m/sec. for a minimum duration of fifteen (15) minutes over a maximum main length of 600 m for mains up to and including 250 mm of main diameter.
 - iii. The Contractor shall provide and install a certified flow meter suitable for verifying the required flushing velocity.
 - iv. The flush water shall not be discharged to the storm sewer system. Flush water (and debris) shall be discharged to a suitable disposal satisfactory to EPCOR.
 - b. Power Flushing:
 - i. If in the Town of Strathmore or the Town representative's opinion, the sediments/debris in the sewer mains is too severe, the Town may require the Contractor to engage the services of a professional utility systems servicing and maintenance firm, at the Contractor's expense, to power flush the sanitary mains.
 - c. Swabbing:
 - i. If swabbing of the sewer Mains is required, the methodology shall be the same as for that of the swabbing of water mains.
4. A Closed-Circuit Television (CCTV) inspection shall be conducted of all sewer mains immediately after the completion of the gravity flushing, or in conjunction with the power flushing.
 - a. If the CCTV inspection indicates that the main flushing did not clean the sewer mains to the satisfaction of the Consultant, the Town of Strathmore; or that deficiencies exist that require repairs to the main, such repairs shall be made by the Contractor and the flushing and CCTV inspection repeated, at the Contractor's expense, until the sewer mains are found to be in a state acceptable to the Consultant and Town of Strathmore.

7.0 Monitoring, Documentation, and Reporting

7.1 Monitoring of the Work

1. The Consultant shall be the primary authority responsible for monitoring and inspecting the Works for compliance with these and other applicable requirements and quality control standards.
2. The Town of Strathmore and the Town's representative (EPOR) shall have full and unrestricted access to inspect the work at all times.
3. Town of Strathmore and its representative (EPCOR) shall conduct inspections at their discretion and report any noted deficiencies and/or quality and workmanship concerns and issues to the Consultant.
4. All noted deficiencies, quality control concerns and workmanship issues must be addressed and resolved to the satisfaction of the Consultant and the Town of Strathmore prior to the issuance of the Construction Completion Certificate (CCC).

7.2 Documentation

1. The Consultant shall document the detailed methodologies and results of all aspects of the water and sewer main flushing, testing, and disinfecting procedures.
2. The documentation shall include a brief description of any 'unusual' events that may have occurred during the construction of the mains that led to the selection of a particular methodology for flushing the mains.
3. Documentation shall be provided for all sections of sewer and water mains flushed, tested, and disinfected, including failed attempts/tests and retests (not just the final successful tests).
4. The Town of Strathmore and its representative's reserve the right to monitor the Consultant's documentation of the flushing, testing, and disinfecting procedures.
5. Town of Strathmore's comments and concerns, brought to the Consultant's attention, shall be addressed by the Consultant to the Town and its representative's satisfaction.

7.3 Final Report

1. The Consultant shall prepare a digital documentation submission based on the documented information compiled during the execution of procedures.
2. Documentation shall be submitted to the Town of Strathmore and will be reviewed for completeness.
3. Final digital documentation shall include but not limited to:
 - a. The Consultant's Flushing, Testing, and Disinfection Plan and construction notes of the procedure that includes:
 - i. The Developer's corporate name
 - ii. Development's name, stage, and phase number
 - iii. Consultant's corporate name and certification page containing the Consulting firm's Permit to Practice stamp and the signed Engineer's stamp of the engineer or technologist of record
 - iv. Contractor's corporate and foreman's name
 - v. Date (month/year)
 - b. CCTV inspection/report
 - c. Photographs taken to record and document the flushing, testing, and disinfection of the sewer and/or water mains. Photographs to include any issues encountered during the procedure.
4. Documentation must be received by the Town of Strathmore's Infrastructure Department prior to issuance of the Construction Completion Certificate (CCC) to the Consultant/Developer.